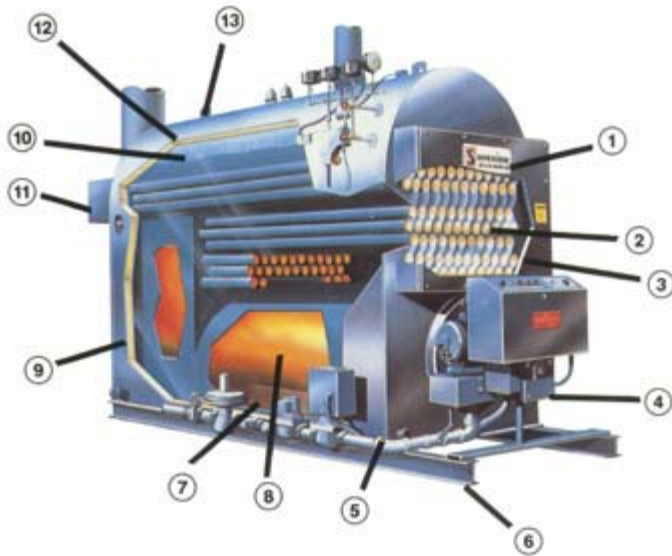
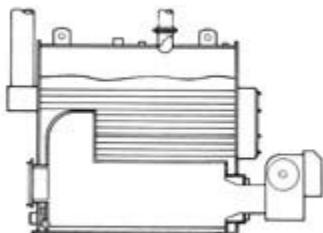


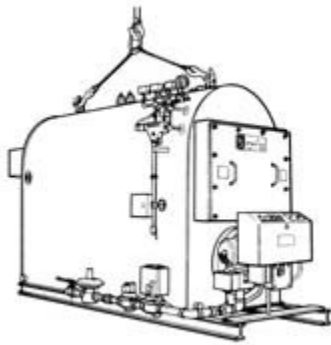
Osage - 3 Pass Firebox Package Boiler



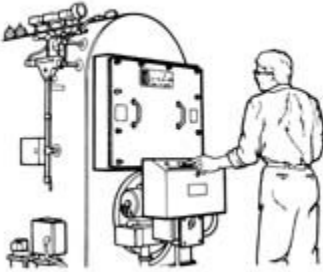
1. Osage packaged firebox boiler-burner units are covered by Superior's warranty of 18 months from shipment or 12 months from startup. See warranty for complete details.
2. Tubes Roller Expanded - All boiler tubes are secured by roller expanding and flaring for tight seal.
3. Front smokebox and access cover are lined with modern space age ceramic fiber blanket for lightweight. Cover provides access to the tubes without disconnecting any fuel or electrical connections or disturbing the firing equipment.
4. Forced draft burner design for efficient operation and ease of maintenance. Standard burners are specifically matched with the firebox volume and size to provide complete I efficient combustion. Forced draft firing requires only a stub stack to the outside.
5. All steel/welded construction to ASME Code Section IV for low pressure heating boilers.
6. Structural steel base provides even distribution of weight and allows for ventilation under the boiler.
7. Combustion chamber floor is poured with high temperature castable refractory securely anchored to the base plate.
8. Large firebox volume insures complete combustion with clean firing, smooth starts and quiet operation.
9. Two-inch - 8 lb. density mineral fiber insulation provides for minimal jacket heat loss and jacket rigidity.
10. Large steam disengaging area and storage volume insures steady water level with a dry steam supply.
11. Rear smokebox with vertical vent connection and tube access cover.
12. Factory installed 22 gauge phosphate coated steel jacket. Finish coated with hard enamel paint.
13. Heavy steel lifting eyes for ease of handling.



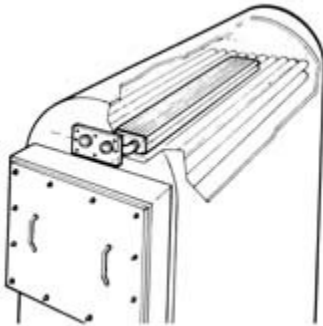
Three pass design assures maximum heat transfer with low stack temperatures resulting in high operating efficiencies and low operating costs.



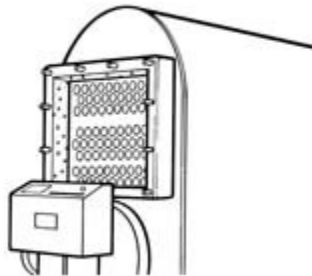
Completely assembled package has refractory lined base, mineral fiber insulation with enamel finished jacket, factory assembled controls, burners and fuel trains.



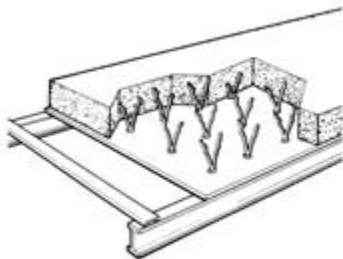
Through factory fire testing, the completed boiler/burner package is subjected to a rigorous factory test to check each electrical component for proper operation and to adjust the fuel/air ratio for smooth operation.



Optional domestic hot water heating coils. Below water level coils are available for both low pressure steam and hot water boiler applications.



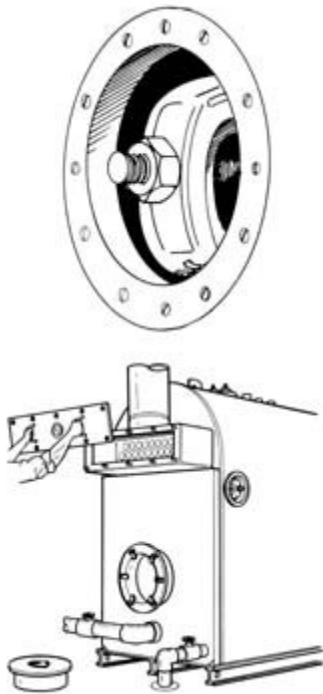
Front smokebox access cover allows for fireside access without burner removal, or disconnecting electrical or fuel lines. Access cover and smokebox are lined with ceramic fiber to reduce heat loss and weight.



Castable refractory for the firebox base poured in place and securely anchored to the structural steel base provides long life and reduced heat loss.

Waterside access is provided by 3" x 4" handholes located (1) at the line of the crown sheet, (1) at the top of the furnace, and (1) 3" x 4" handhole or 12" x 16"

manway on the top centerline.



The rear access cover allows for inspection and cleaning of the rear tubesheet and tubes without the removal of the stack. On boilers with 441 sq. ft. of heating surface and larger, a 17" rear access plug allows for firebox and refractory inspection.



ASME
CONSTRUCTION

National Board Of
Boiler and Pressure
Vessel Inspection



Osage packaged firebox boilers are manufactured to the requirements of ASME Code Section IV for low pressure heating boilers. Each unit received inspection by a registered national board inspector. IRI/FM and other code requirements are available.



U.L. LABEL "B" LISTED
IRI / FM - Approval



| [Products](#) - [Specifications](#) - [Dimensional Data](#) - [References](#) - [Distributors](#) |
| [Testimonials](#) - [Showcase](#) - [Employment](#) - [Email Form](#) - [Home](#) |

Superior Boiler Works
P.O. Box 1527
Hutchinson, KS 67504-1527
Toll Free: (800) 444-6693
Phone: (620) 662-6693
Fax: (620) 662-7586
E-mail: sbw@superiorboiler.com

© 1999-2002 Copyright Superior Boiler Works, Inc. All rights Reserved.