

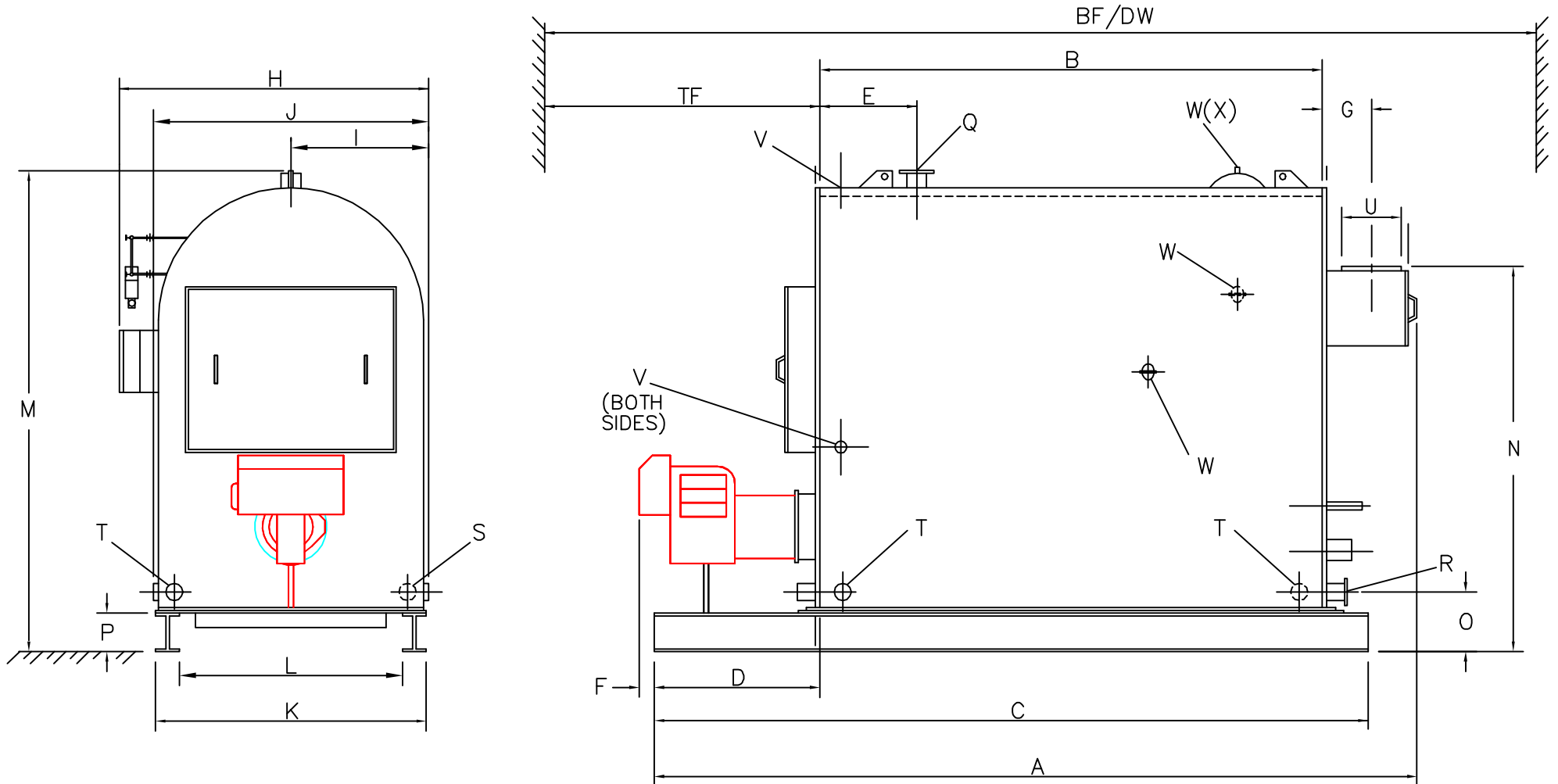


OSAGE

3 PASS
FIREBOX

DIMENSIONAL DATA
WATER BOILERS
30 PSIG

15 THRU 358 BoHP
5 SQ. FT. / BoHP



BOILER MODEL	DIM	75	100	124	150	201	260	306	364	441	508	624	751	897	1021	1245	1513	1788	
LENGTHS: Overall																			
Shell	A	78	90	85	92	103	104	115	130	137	148	168	188	176	193	208	237	231	
Base	B	37 1/2	49 1/2	42 1/2	51	67 1/2	60	70 1/2	84	82 1/2	94	114	136	117	134	146	175	162	
Front Plate To	C	67	77	70 3/4	78	95	87 1/2	100	114	116 1/2	128	148	167 1/2	152 1/2	170	184	213	202	
Base Extension	D	26	26	26	25	25	26	27	28	31	31	31	29	33	33	35	35	37	
Front Plate To C of Supply Nozzle	E	11	17	11	20	20	25	31	31	30	37	37	50	44	50	45	45	55	
Front Of Base To End Of Burner (GP)	F	5	5	5	6	6	7	7	5	2	2	4	7	3	13	12	12	14	
Rear Of Shell to C Stack Connection	G	6	6	7	7	7	8	8	8	9	9	9	9	12	12	13	13	15	
WIDTHS: Overall																			
Centerline To End Of Coupling	H	45	45	50	50	50	56	56	56	65	65	65	65	69	69	74	74	82	
Over Jacket	I	19	19	21	21	21	24	24	24	29	29	29	29	31	31	33	33	37	
Base Width Outside	J	37	37	42	42	42	50	50	50	56	56	56	56	62	62	67	67	73	
Base Width Inside	K	39	39	42	42	42	51	51	51	57	57	57	57	63	63	69	69	74	
Height Of Runner	L	31	31	34	34	34	43	43	43	49	49	49	49	55	55	61	61	66	
HEIGHTS: Overall																			
Base to Stack Conn.	M	63	63	71	71	71	77	77	77	91	91	91	91	110	110	112	112	129	
Floor To Return C	N	46	46	54	54	54	60	60	60	70	70	70	85	85	85	88	88	103	
Height Of Runner	O	8	8	9	9	9	9	9	9	12	12	12	12	14	14	14	14	14	
CONNECTIONS:																			
Steam Outlet	Q	3	3	3	3	4	4	4	4	6*	6*	6*	6*	8*	8*	8*	8*	10*	
Feed Water	R	3	3	3	3	4	4	4	4	6*	6*	6*	6*	8*	8*	8*	8*	10*	
Blowdown	S	2	2	2	2	2	2	2	2	2 1/2	2 1/2	2 1/2	2 1/2	2 1/2	2 1/2	2 1/2	2 1/2	2 1/2	
Inspection (3)	T	2	2	2	2	2	2	2	2	2 1/2	2 1/2	2 1/2	2 1/2	2 1/2	2 1/2	2 1/2	2 1/2	2 1/2	
Stack Conn. OD	U	8	8	10	10	10	12	12	12	16	16	16	16	18	18	20	20	24	
Aux. Conn. - Top/Right/Left	V	1	1	1	1	1	1	1	1	1	1	1	1	1	1	1	1	1	
ACCESS OPENINGS:																			
Handholes	W	3	3	3	3	3	3	3	3	3	3	3	3	3	3	2	2	2	
Manway 12" x 16"	X	-	-	-	-	-	-	-	-	-	-	-	-	-	-	1	1	1	
MINIMUM CLEARANCES																			
Tube Removal Front	TF	41	53	46	54	71	63	74	87	86	97	117	139	120	137	149	178	166	
Minimum Boiler Room Length Dimension 'BF' Allows 48" Min. Front And 18" Rear Clearance For Door Removal And Tube Removal.**																			
Tube Removal-Front	BF	149	161	156	164	175	177	188	207	211	232	272	316	281	315	340	398	378	
Dimension 'DW' Allows 48" Front And 18" Rear Clearance.**																			
Thru Door or Window	DW	149	161	156	164	175	177	188	201	205	216	238	261	245	272	287	315	311	

NOTE: * 150 PSIG RF Flange

NOTE:

All Dimensions Are Approximate And May Be Used For Layout.
SUPERIOR BOILER WORKS, INC. Reserves The Right To Change Dimensions Due To Product Revisions Or Requirements.

**Check Local, State And Federal Codes.